

Davit Crane Composite



COMPOZITE

Portable
and Ultra
Lightweight
Composite Frame
Davit Crane



OZ1200DAV
1200 lbs. Capacity

IMPORTANT!

Load ratings will vary depending on:
Boom Position, Wire Rope Length,
Wire Rope Diameter.

VIDEO:

DAVIT CRANE FEATURES



Or visit:
ozliftingproducts.com

[PATENTED]

COMPOZITE DAVIT CRANE

FEATURES:

- 1 person set up.
- No tools required for installation
- Boom/extension and mast made of Advanced Composite Material
- Lightweight (40% lighter than steel)
- Corrosion resistant
- Metal components mil-spec, zinc-plated
- External handle helps rotate crane under load
- 4-position boom
- Ratchet screw jack adjusts boom under load giving you infinite range of lift
- 360-degree rotation of crane on sleeve bearing
- DIN-Rated hand winch equipped standard with a load-holding weatherproof Weston Brake
- Hand winch accepts both swaged ball fitting and bare end cable termination points
- Quick connect winch handle with power drill adapter included
- Pedestal base sold separately and comes with mounting template
- Smart Latch technology at boom/mast connection

**AC and DC power winches now available. Call for details.*

*Cable assembly
sold separately

Winch: 7 lbs. →

Large Boom Section: 27 lbs. ↓

Small Boom Section: 16 lbs. ↓

Handle: 3 lbs. →

Part weights are for
reference only and
subject to change
without notice.

Mast: 30 lbs. →

**Individually Tested
Test Certificate
- Included -**

*Pedestal, Socket and Wall Mount
bases sold separately



Steel Wire Rope (FOR MANUAL WINCH)

OZGAL.19-80B	3/16" x 80'	Galvanized cable assembly
OZSS.19-80B	3/16" x 80'	Stainless steel cable assembly
OZGAL.25-55B	1/4" x 55'	Galvanized cable assembly
OZSS.25-55B	1/4" x 55'	Stainless steel cable assembly

All cable assemblies come with swaged ball and swivel hook
with latch. **Custom cable length available.**
3/16" - 90ft max. length • 1/4" - 45ft max. length

Steel Wire Rope (FOR MANUAL AND POWER WINCH)

OZGAL.19-90	3/16" x 90'	Galvanized cable assembly
OZSS.19-90	3/16" x 90'	Stainless Steel cable assembly
OZGAL.25-45	1/4" x 45'	Galvanized cable assembly
OZSS.25-45	1/4" x 45'	Stainless Steel cable assembly

All cable assemblies come with swivel hook with latch.
Custom cable length available.
3/16" - 90ft max. length • 1/4" - 45ft max. length

**Call for a custom base*

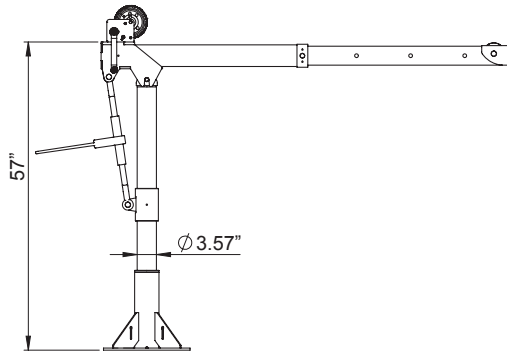
Davit Crane Composite



SPECIFICATIONS

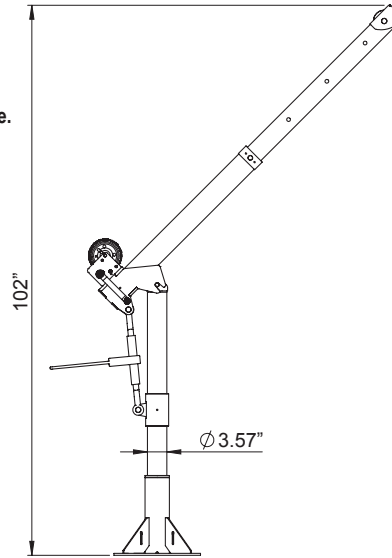
OZ1200DAV WITH PEDESTAL BASE

Dimensions are for reference only and subject to change without notice.



Pedestal Base Boom Position A:

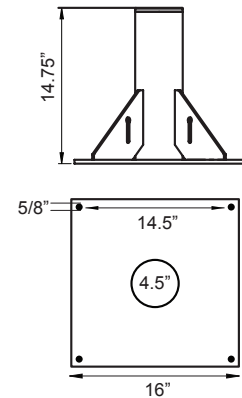
- Boom Position 1: Height 50" Reach 36"
- Boom Position 2: Height 50" Reach 46"
- Boom Position 3: Height 50" Reach 56"
- Boom Position 4: Height 50" Reach 66"



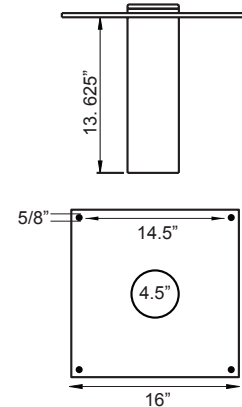
Pedestal Base Boom Position B:

- Boom Position 1: Height 74" Reach 22"
- Boom Position 2: Height 81" Reach 29"
- Boom Position 3: Height 88" Reach 36"
- Boom Position 4: Height 95" Reach 43"

OZPED1



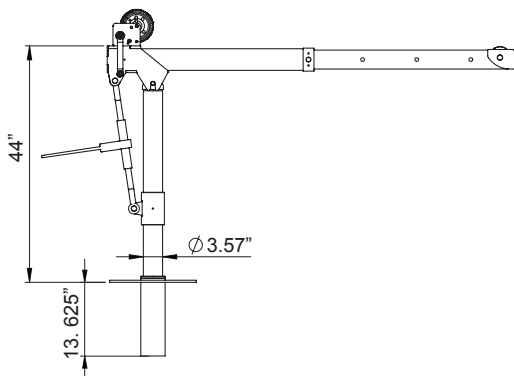
OZSOC1



SPECIFICATIONS

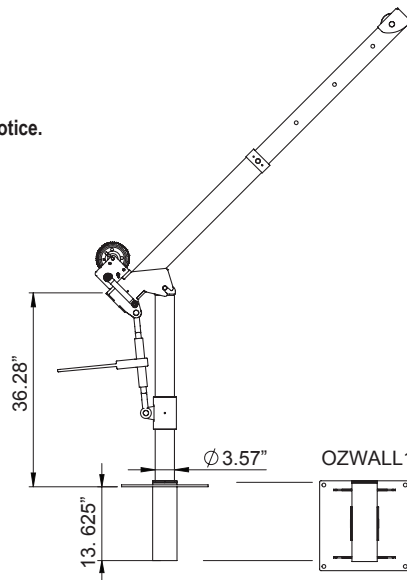
OZ1200DAV WITH SOCKET BASE

Dimensions are for reference only and subject to change without notice.



Socket Base Boom Position A:

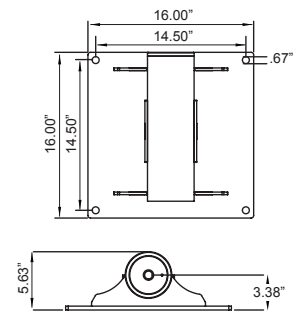
- Boom Position 1: Height 37" Reach 36"
- Boom Position 2: Height 37" Reach 46"
- Boom Position 3: Height 37" Reach 56"
- Boom Position 4: Height 37" Reach 66"



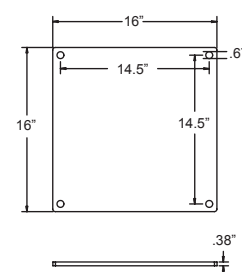
Socket Base Boom Position B:

- Boom Position 1: Height 61" Reach 22"
- Boom Position 2: Height 68" Reach 29"
- Boom Position 3: Height 75" Reach 36"
- Boom Position 4: Height 82" Reach 43"

OZWALL1



OZBACK1



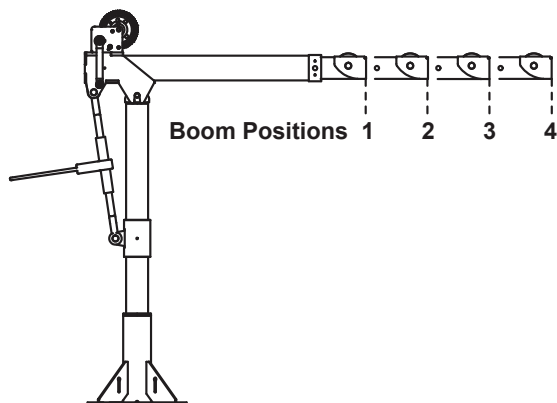
Davit Crane Composite



LOAD RATINGS OZ1200DAV

*Table based on 1/4 inch wire rope. 3/16" cable will be lower.

Rigging



Load Ratings (lbs.)	1st. Layer	Mid Drum	Full Drum
Boom Position 1	1200 lbs.	875 lbs.	550 lbs.
Boom Position 2	900 lbs.	875 lbs.	550 lbs.
Boom Position 3	700 lbs.	700 lbs.	550 lbs.
Boom Position 4	400 lbs.	400 lbs.	400 lbs.

3/16" Cable	Boom Position 1	Boom Position 2	Boom Position 3	Boom Position 4
6 ft.	800 lbs.	800 lbs.	700 lbs.	400 lbs.
14 ft.	800 lbs.	800 lbs.	700 lbs.	400 lbs.
22 ft.	800 lbs.	800 lbs.	700 lbs.	400 lbs.
31 ft.	800 lbs.	800 lbs.	700 lbs.	400 lbs.
41 ft.	775 lbs.	775 lbs.	700 lbs.	400 lbs.
52 ft.	725 lbs.	725 lbs.	700 lbs.	400 lbs.
64 ft.	650 lbs.	650 lbs.	650 lbs.	400 lbs.
77 ft.	625 lbs.	625 lbs.	625 lbs.	400 lbs.
90 ft.	550 lbs.	550 lbs.	550 lbs.	400 lbs.

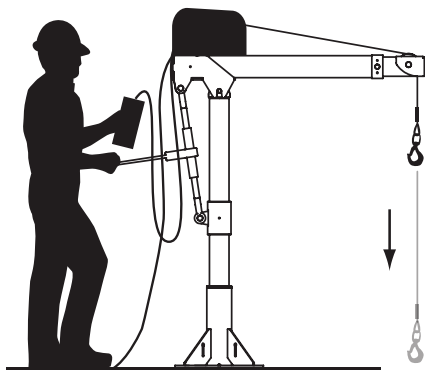
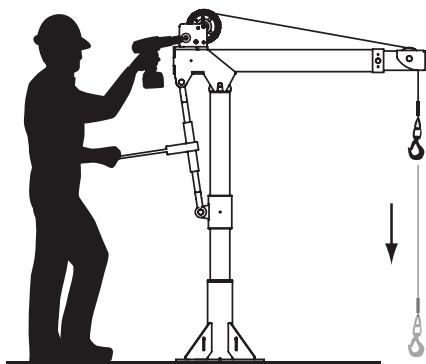
1/4" Cable	Boom Position 1	Boom Position 2	Boom Position 3	Boom Position 4
4 ft.	1200 lbs.	900 lbs.	700 lbs.	400 lbs.
9 ft.	1025 lbs.	900 lbs.	700 lbs.	400 lbs.
14 ft.	875 lbs.	875 lbs.	700 lbs.	400 lbs.
20 ft.	775 lbs.	775 lbs.	700 lbs.	400 lbs.
27 ft.	700 lbs.	700 lbs.	700 lbs.	400 lbs.
35 ft.	625 lbs.	625 lbs.	625 lbs.	400 lbs.
43 ft.	575 lbs.	575 lbs.	575 lbs.	400 lbs.
50 ft.	550 lbs.	550 lbs.	550 lbs.	400 lbs.

OPTIONS FOR FASTER LOWERING AND RAISING



Detach winch handle for drill option.

AC and DC power winches now available. See page 20.
(OZACW, OZDCW)



VIDEO:

DAVIT CRANE ASSEMBLY



Or visit: ozliftingproducts.com

VIDEO:

DAVIT CRANE TEST PROCEDURES



Or visit: ozliftingproducts.com

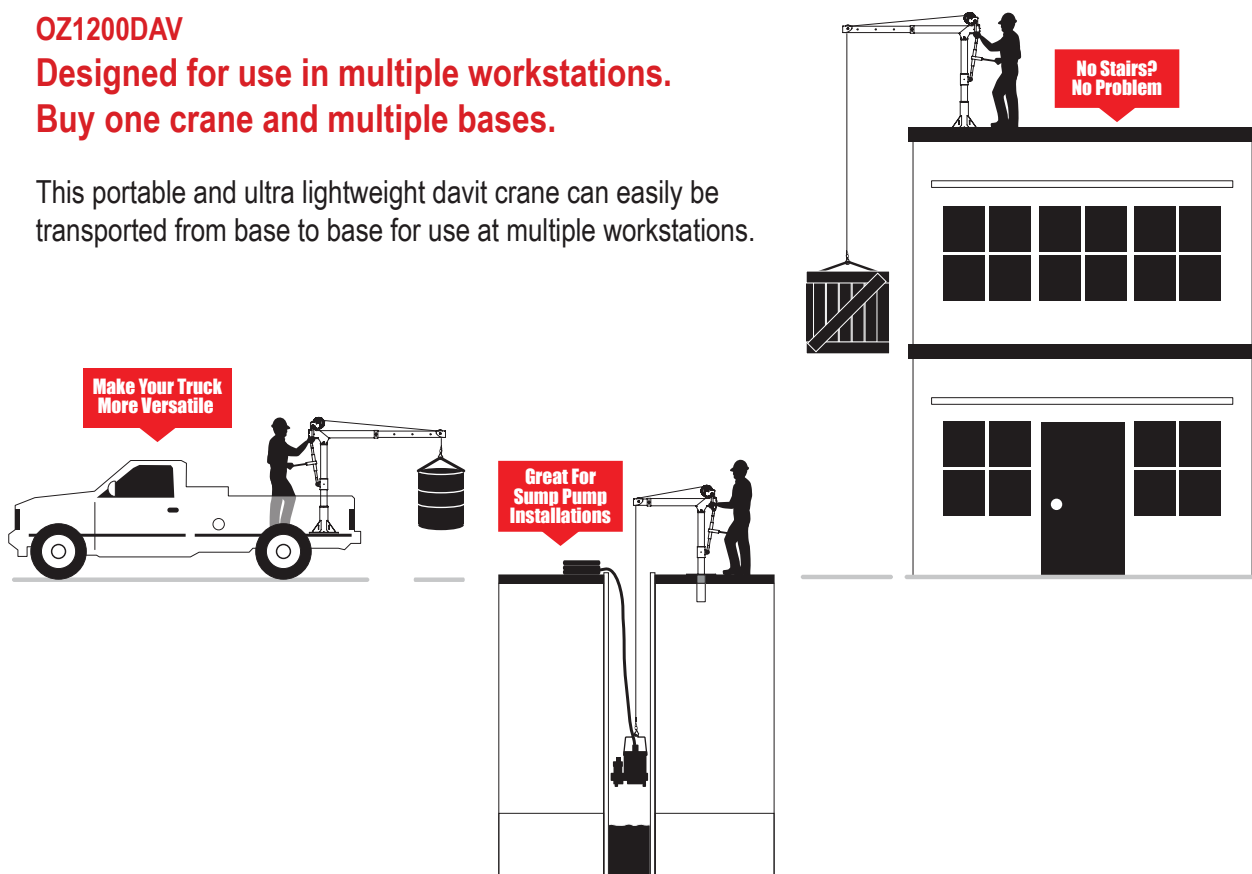
Davit Crane Composite



OZ1200DAV

**Designed for use in multiple workstations.
Buy one crane and multiple bases.**

This portable and ultra lightweight davit crane can easily be transported from base to base for use at multiple workstations.



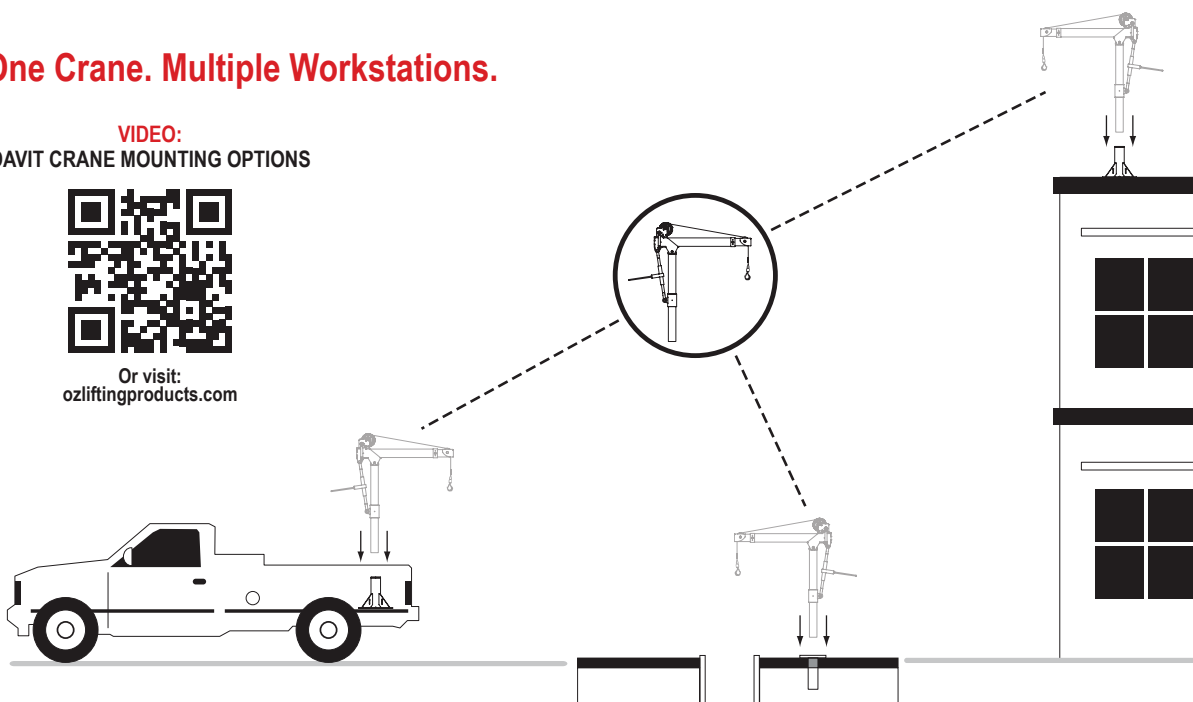
Rigging

One Crane. Multiple Workstations.

VIDEO:
DAVIT CRANE MOUNTING OPTIONS



Or visit:
ozliftingproducts.com



Davit Crane

Steel - Zinc Plated



Rigging



*Cable assembly sold separately

DAVIT 1000 BY OZ

Individually Tested
Test Certificate
- Included -

DAVIT 1000 BY OZ

FEATURES:

- 360-degree rotation
- 4 boom height adjustments
- 1000 lb. rating
- Manual Din rated CE winch with brake. Includes power drill adaptor
- ROHS Compliant Zinc Plated Finish
- AC and DC winch option
- Individually tested and includes test certificate
- Portable
- Pedestal or socket bases (includes mounting template)

**AC and DC power winches now available.*

***Call for custom davit crane colors**

*Pedestal, Socket, and Wall Mount Bases sold separately



Steel Wire Rope (FOR MANUAL WINCH)

OZGAL.19-80B	3/16" x 80'	Galvanized cable assembly
OZSS.19-80B	3/16" x 80'	Stainless steel cable assembly
OZGAL.25-55B	1/4" x 55'	Galvanized cable assembly
OZSS.25-55B	1/4" x 55'	Stainless steel cable assembly

All cable assemblies come with swaged ball and swivel hook with latch. **Custom cable length available.**
3/16" - 90ft max. length • 1/4" - 45ft max. length

***Call for a custom base**

Steel Wire Rope (FOR MANUAL AND POWER WINCH)

OZGAL.19-90	3/16" x 90'	Galvanized cable assembly
OZSS.19-90	3/16" x 90'	Stainless Steel cable assembly
OZGAL.25-45	1/4" x 45'	Galvanized cable assembly
OZSS.25-45	1/4" x 45'	Stainless Steel cable assembly

All cable assemblies come with swivel hook with latch. **Custom cable length available.**
3/16" - 90ft max. length • 1/4" - 45ft max. length



OZ1000DAV
1000 lbs. Capacity

Also Available in
500 lbs. Capacity.



Contact us for
more information.

IMPORTANT!

Load ratings will vary depending on:
Wire Rope Length and
Wire Rope Diameter.
See Load Rating Table on Pg. 26

VIDEO:

DAVIT 1000 BY OZ FEATURES



Or visit: ozliftingproducts.com

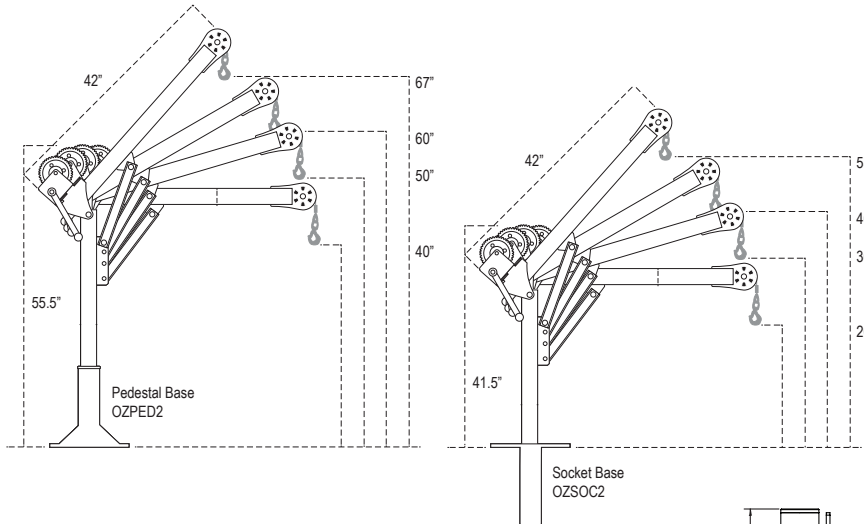
Davit Crane

Steel - Zinc Plated



SPECIFICATIONS OZ1000DAV

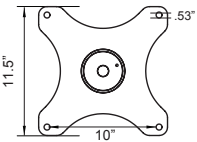
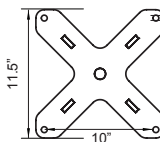
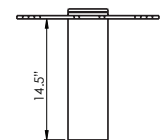
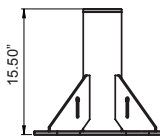
Dimensions are for reference only and subject to change without notice.



DAVIT 1000 BY **OZ**

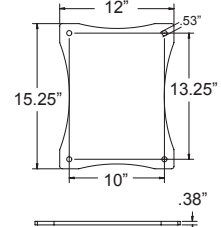
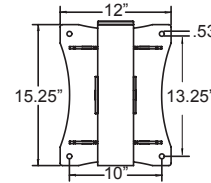
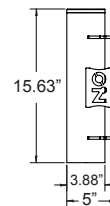
OZPED2

OZSOC2



OZWALL2

OZBACK2



LOAD RATINGS OZ1000DAV

Table based on 1/4 inch wire rope. 3/16" cable will be lower.

Load Ratings (lbs.)	1st. Layer	Mid Drum	Full Drum
	1000 lbs.	875 lbs.	550 lbs.

3/16" Cable									
Lift	6 ft.	14 ft.	22 ft.	31 ft.	41 ft.	52 ft.	64 ft.	77 ft.	90 ft.
Capacity	800 lbs.	800 lbs.	800 lbs.	800 lbs.	775 lbs.	725 lbs.	650 lbs.	650 lbs.	550 lbs.

1/4" Cable									
Lift	9 ft.	14 ft.	20 ft.	27 ft.	35 ft.	43 ft.	50 ft.		
Capacity	1000 lbs.	875 lbs.	775 lbs.	700 lbs.	625 lbs.	575 lbs.	550 lbs.		

OPTIONS FOR FASTER LOWERING AND RAISING



Detach winch handle for drill option.

AC / DC power winches now available. See page 20.
(OZACW, OZDCW)

